

FIREMAPLE

YOUR MOBILE KITCHEN



www.fire-maple.com



cs@fire-maple.com



[firemaple_gear](https://www.instagram.com/firemaple_gear)



[firemaple](https://www.facebook.com/firemaple)



IN 2003

Our founder David Lv came upon a forest of red maple leaves, the vast beautiful orange and red landscape ignited the name Fire Maple.



Fire Maple believes cooking in the great outdoors should be as easy and delicious as the indoors. Our line of camp cooking gear is meticulously designed and well-priced to help you make fresh and healthy meals.

We are passionate about food, cooking, eating and we believe they are all interconnected. Our connections to food are personal and collective, extending across histories, cultures and time.



The passion to cook has driven us to expect great meals in some of our favorite places and test our gear in the harshest environments, because of this, our camp cooking gear has been internationally recognized and awarded 3 times with best in class, Gold Medal Awards.

So, make a meal, share it with a friend or a stranger, and turn the art of great cooking into your adventure lifestyle.



STOVE

Simplicity is the ultimate sophistication



Polaris

Fire Maple pressure regulator series is one of our most technologically advanced back-packing stoves.

It can help you to maintain a stable and consistent burner flame under different environmental conditions.




Polaris
Pressure-regulator Gas Stove

Material: Stainless Steel, Aluminium Alloy

Size: <Unfolded> Ø114x95mm, Ø4.5x3.7in
<Folded> Ø49x82mm, Ø1.9x3.2in

Power: 178.6g/h, 2.5kW, 8530BTU/h

Weight: 76g, 2.7oz



Polaris
Pressure Regulator Remote Gas Stove

Material: Stainless steel, Aluminum alloy, Copper

Size: <Unfolded> Ø156x93mm, Ø6.1x3.6in
<Folded> Ø83x93mm, Ø3.2x3.6in

Power: 240.3g/h, 2.9kW, 9895BTU/h

Weight: 180g, 6.35oz

Polaris

Red Blue

Pressure Regulator Cooking System

Material: Aluminum Alloy, Stainless Steel, Tritan, Copper, PA6, ABS

Size: <Unfolded> 123x254x264.5mm, 4.8x10x10.4in;
<Folded> 123x132x207mm, 4.8x5.2x8.1in;

Power: 1.8kW, 6142BTU/h, 129g/h

Weight: 622g, 22oz



Polaris

Fire Maple cooking system series is a super compact and highly efficient cooking set for solo outing, perfect for all types of outdoor activities: camping, trekking, bicycle touring, paddling, fishing, hunting, picnics, and more.



Star X1

Cooking System

● Gradient color
 ● Black

Material: Aluminium, Copper, Tritan, PA, TPE, Stainless Steel

Size: <Unfolded> 132x225x231mm, 5.2x8.9x9.1in
 <Folded> 132x131.5x170mm, 5.2x5.2x6.7in

Power: 2.2kW, 7507BTU/h, 158 g/h

Weight: 511g, 1.1lbs



Star X2

Cooking System

● Orange
 ● Green
 ● Tricolor

Material: Aluminium, Copper, PC, Silicone, Stainless Steel

Size: <Unfolded> 121x255x263.5mm, 4.8x10x10.4in
 <Folded> 121x133x202.5mm, 4.8x5.2x8in

Power: 158 g/h, 2.2kW, 7507BTU/h

Weight: 630g, 1.38lbs



Star X3

Cooking System

Material: Aluminium, Copper, PC, Silicone, Stainless Steel

Size: <Unfolded> 121x255x247mm, 4.8x10x9.7in
 <Folded> 121x133x185mm, 4.8x5.2x7.3in

Power: 158 g/h, 2.2kW, 7507BTU/h

Weight: 600g, 1.3lbs





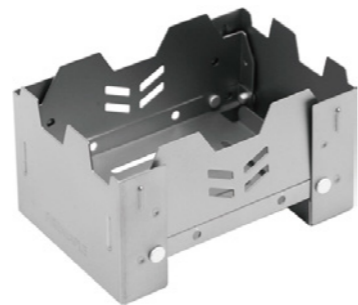
Lotus

Titanium Solid Alcohol Stove

Material: Titanium

Size: <Unfolded> 97.5x69x55mm, 3.8x2.7x2.2in
<Folded> 100x69x20mm, 3.9x2.7x0.8in

Weight: 71g, 2.5oz



Lac

Butane Gas Stove

● Pine ● Misty gray

Material: Stainless Steel, Copper, Aluminum Alloy

Size: 214x188x120mm, 8.4x7.4x4.7in

Power: 2300W, 178.8g/h, 7848BTU/h

Weight: 1.23kg, 2.7lbs





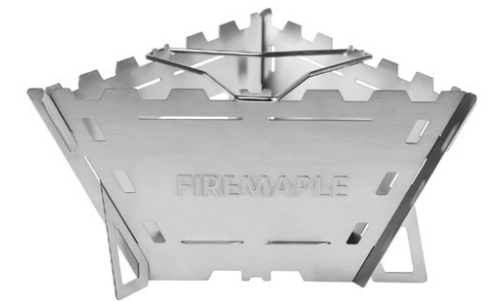
Maverick

Wood Stove

Material: Stainless Steel

Size: <Unfolded> 234x282x140mm, 9.2x11.1x5.5in
<Folded> 282x147x8mm, 11.1x5.8x0.3in

Weight: 617g, 1.3lbs



Maverick

Wood Stove

Material: Stainless Steel

Size: <Unfolded> 290x290x134mm, 11.4x11.4x5.3in
<Folded> 284.5x163x18mm, 11.2x6.4x0.7in

Weight: 1170g, 2.6lbs





Mars

Radiant Stove System

Material: Aluminum Alloy, Stainless Steel, Silicone, PP, Tritan

Size: <Unfolded> 128x258x193mm; 5x10.1x7.6in <Volume> 1.25L, 42.3us_oz
<Folded> 128x137x193mm; 5x5.4x7.6in

Power: 2.1kW, 7165BTU/h, 150g/h

Weight: 762.2g, 26.88oz



Hornet II

Titanium Gas Stove

Material: Titanium, Stainless Steel, Copper, Aluminum Alloy

Size: <Unfolded> Ø122x82mm, Ø4.8x3.2in
<Folded> Ø50x80mm, Ø2x3.1in

Power: 179g/h, 2.5kW, 8531BTU/h

Weight: 48.5g, 1.7oz





Sunflower
Gas Camping Stove

Material: Aluminium Alloy, Stainless Steel, Copper, FPM, Ceramics

Size: <Unfolded> 180x167x125mm, 7.1x6.6x4.9in
<Folded> 165x115x82.5mm, 6.5x4.5x3.2in

Power: 1.8kw, 6141BTU/h, 156g/h

Weight: 818g, 28.85oz

NEW



Fortress

Titanium Wood Stove

Material: Titanium

Size: <Unfolded> 130x136x160mm, 5.1x5.4x6.3in
<Folded> 160x136x11mm, 6.3x5.4x0.4in

Weight: 219g, 7.7oz



NEW

Petrel

Ultralight Cooking System

Material: Titanium, Aluminium Alloy, Tritan, Stainless Steel, Copper, PVC, Silicone, FPM

Size: <Unfolded> 102x223x149mm, 4x8.8x5.9 in
<Folded> 102x106x149mm, 4x4.2x5.9in

Power: 2.5kW, 179g/h, 8531BTU/h

Weight: 205g, 7.2oz



NEW

Mars

Radiant Stove

Material: Aluminum Alloy, Stainless Steel, FPM

Size: <Unfolded> Ø193x68mm, Ø7.6x2.7in
<Folded> Ø113x68mm, Ø4.4x2.7in

Power: 2.1kW, 7165BTU/h, 150g/h

Weight: 346g, 12.2oz



NEW

Cooking Kit

W/alcohol Burner

Material: Aluminium Alloy, Stainless steel, Copper, Rubber, ABS

Size: <Unfolded> 213x213x150mm, 8.4x8.4x5.9in
<Folded> 213x213x128mm, 8.4x8.4x5in

Capacity: <Pot(L)> 2L, 67.5us_oz; <Frypan(L)> 0.9L, 30.4us_oz

Weight: 0.87kg, 1.9lbs



NEW

Trident

Foldable Portable Butane Stove

Material: Aluminium Alloy, Stainless Steel, Copper, Polyamide

Size: <Unfolded> 182x158x118mm, 7.2x6.2x4.6in
<Folded> 134x60x118mm, 5.3x2.4x4.6in

Power: 2.2KW, 170g/h, 9205BTU/h

Weight: 225g, 7.9oz



NEW

Cooking Kit

W/gas Burner

Material: Aluminium Alloy, Stainless steel, Copper, Rubber, ABS

Size: <Unfolded> 213x213x150mm, 8.4x8.4x5.9in
<Folded> 213x213x128mm, 8.4x8.4x5in

Capacity: <Pot (M)> 1.5L, 50.6us_oz; <Pot(L)> 2L, 67.5us_oz
<Frypan(L)> 0.9L, 30.4us_oz; <T4 Kettle> 1.3L, 44us_oz

Power: 3KW, 215g/h, 10200BTU/h

Weight: 1.3kg, 2.9lbs



NEW

FMS-300T

Titanium Gas Stove

Orange ●
Black ●

Material: Titanium, Stainless Steel, Aluminum Alloy, Copper

Size: <Unfolded> Ø85x68mm, Ø3.35x2.68in
<Folded> Ø40x51mm, Ø1.57x2.01in

Power: 185g/h, 2.6kW, 8872BTU/h

Weight: 45g, 1.59oz



Volcano

Alcohol Camping Stove

Material: Stainless Steel, Aluminium Alloy, Copper

Size: <Unfolded> Ø123x93mm, Ø4.8x3.7in
<Folded> Ø110x93mm, Ø4.3x3.7in

Capacity: <Max> 100ml, 3.38us_oz

Weight: 226g, 8oz



FMS-125

Gas Stove

Material: Stainless Steel, Aluminum Alloy, Copper

Size: <Unfolded> 140x140x82mm, 5.5x5.5x3.2in
<Folded> 90x76x67mm, 3.5x3x2.6in

Power: 3.24kw, 230g/h, 11058BTU/h

Weight: 230g, 8.11oz



Turbine

Gasoline Stove

Material: Stainless Steel, Aluminium Alloy, Copper, POM

Size: <Unfolded> Ø114x94mm, Ø4.5x3.7in
<Folded> Ø49x82mm, Ø1.9x3.2in

Power: 3500W, 11942BTU/h

Weight: <Stove> 233.5g, 8.2oz; <500ml fuel bottle> 115.7g, 4.1oz



Blade 2

Titanium Gas Stove with Preheat Tube

Material: Titanium, Stainless Steel, Aluminum Alloy, Copper

Size: <Unfolded> Ø145x75mm, Ø5.7x2.95in
<Folded> Ø75x89mm, Ø2.95x3.5in

Power: 203g/h, 2.8kW, 9554BTU/h

Weight: 135g, 4.76oz



Saturn

Gas Stove with Preheat Tube

Material: Stainless Steel, Aluminum Alloy, Copper

Size: <Unfolded> Ø250x118mm, Ø9.8x4.6in
<Folded> Ø180x92mm, Ø7x3.6in

Power: 4.4kW, 338g/h, 15000BTU/h

Weight: 1010g, 2.2lb



Rock

Gas Stove

Material: Stainless Steel, Aluminium Alloy, Copper

Size: <Unfolded> Ø156x93mm, Ø6.1x3.6in
<Folded> Ø83x93mm, Ø3.2x3.6in

Power: 214g/h, 3kW, 10237BTU/h

Weight: 171g, 6oz



FMS-102

Gas Stove

Material: Aluminum Alloy, Stainless Steel, Copper

Size: <Unfolded> Ø140x86mm, Ø5.5x3.4in
<Folded> Ø60x87mm, Ø2.3x3.4in

Power: 3.2kW, 230g/h, 10900BTU/h

Weight: 125g, 4.4oz



FMS-103

Gas Stove

Material: Aluminum Alloy, Stainless Steel, Copper

Size: <Unfolded> Ø123x80mm, Ø4.8x3.1in
<Folded> Ø70x96mm, Ø2.7x3.8in

Power: 3.2kW, 230g/h, 10900BTU/h

Weight: 103g, 3.6oz



FMS-105

Gas Stove

Material: Aluminum Alloy, Stainless Steel, Copper

Size: <Unfolded> Ø165x71mm, Ø6.5x2.8in
<Folded> Ø90x60mm, Ø3.5x2.3in

Power: 3kW, 215g/h, 10200BTU/h

Weight: 225g, 7.9oz



FMS-105+

Gas Stove

Material: Aluminum Alloy, Stainless Steel, Copper

Size: <Unfolded> Ø165x71mm, Ø6.5x2.8in
<Folded> Ø90x60mm, Ø3.5x2.3in

Power: 3kW, 215g/h, 10200BTU/h

Weight: 253g, 8.9oz



FMS-121

Remote Wind-Resistant Gas Stove

Material: Aluminum Alloy, Copper, Stainless Steel

Size: <Unfolded> Ø170x97mm, 6.7x3.8in
<Folded> Ø96x85mm, 3.8x3.3in

Power: 2.2kW, 160g/h, 7509BTU/h

Weight: 302g, 10.6oz



FMS-121+

Wind-Resistant Gas Stove for Butane Cartridge

Material: Aluminum Alloy, Copper, Stainless Steel

Size: <Unfolded> Ø170x97mm, 6.7x3.8in
<Folded> Ø96x85mm, 3.8x3.3in

Power: 2.2 kW, 160g/h, 7509BTU/h

Weight: 330g, 11.6oz



FMS-116

Gas Stove

Material: Aluminum Alloy, Stainless Steel, Copper

Size: <Unfolded> Ø108x69mm, Ø4.2x2.7in
<Folded> Ø64x67mm, Ø2.5x2.6in

Power: 3.5kW, 250g/h, 11943BTU/h

Weight: 70g, 2.4oz



FMS-116T

Titanium Gas Stove

Material: Aluminum Alloy, Titanium, Stainless Steel, Copper

Size: <Unfolded> Ø109x70mm, Ø4.3x2.7in
<Folded> Ø62x67mm, Ø2.4x2.6in

Power: 2.3kW, 167g/h, 7848BTU/h

Weight: 48g, 1.7oz



COOKWARE

Now I see the secret of making the best person, it is to grow in the open air and to eat and sleep with the earth.
- Walt Whitman





Feast

Fire Maple Feast cookware series is durable and versatile, made of hard anodized aluminum, with patented lockable handle, making the series a great gift for both beginner and experienced campers and outdoor enthusiasts!

1-2 person

Feast 1 ● ●
 Aluminum Cookware

Material: Hard Anodized Aluminum, Stainless Steel, ABS, PP

Size: <Pot(S)> Ø146x75mm, Ø5.7x2.9in
 <Frypan(S)> Ø152x42mm, Ø6x1.6in

Capacity: <Pot(S)> 0.8L, 27us_oz
 <Frypan(S)> 0.5L, 16.8us_oz

Weight: 343g, 12.1oz

1-2 person

Feast 2 ● ●
 Aluminum Cookware

Material: Hard Anodized Aluminum, Stainless Steel, ABS, PP

Size: <Pot(M)> Ø168x98mm, Ø6.6x3.8in
 <Frypan(M)> Ø174x42mm, Ø6.8x1.6in
 <T3 Kettle> Ø152x74mm, Ø6x2.8in

Capacity: <Pot(M)> 1.5L, 50.6us_oz
 <Frypan(M)> 0.7L, 23.6us_oz
 <T3 Kettle> 0.8L, 27us_oz

Weight: 686g, 24.2oz



Feast 3

Orange ● Black

Aluminum Cookware

Material: Hard Anodized Aluminum, Stainless Steel, ABS, PP

Size: <Pot (S)> Ø146x75mm, Ø5.7x2.9in
 <Pot (M)> Ø168x98mm, Ø6.6x3.8in
 <Frypan (M)> Ø174x42mm, Ø6.8x1.6in

Capacity: <Pot (S)> 0.8L, 27us_oz
 <Pot (M)> 1.5L, 50.6us_oz
 <Frypan (M)> 0.7L, 23.6us_oz

Weight: 706g, 25oz



3-4person

Feast 4

Orange ● Black

Aluminum Cookware

Material: Hard Anodized Aluminum, Stainless Steel, ABS, PP

Size: <Pot(M)> Ø168x98mm, Ø6.6x3.8in
 <Pot(L)> Ø188x118mm, Ø7.4x4.6in
 <Frypan(L)> Ø194x45mm, Ø7.6x1.7in
 <T3 Kettle> Ø152x74mm, Ø6x2.8in

Capacity: <Pot (M)> 1.5L, 50.6us_oz
 <Pot(L)> 2L, 67.5us_oz
 <Frypan(L)> 0.9L, 30.4us_oz
 <T3 Kettle> 0.8L, 27us_oz

Weight: 1014g, 2.2lbs



3-4person

Feast 5

Orange ● Black

Aluminum Cookware

Material: Hard Anodized Aluminum, Stainless Steel, ABS, PP

Size: <Pot (S)> Ø146x75mm, Ø5.7x2.9in
 <Pot (M)> Ø168x98mm, Ø6.6x3.8in
 <Pot (L)> Ø188x118mm, Ø7.4x4.6in
 <Frypan (L)> Ø194x42mm, Ø7.6x1.6in

Capacity: <Pot (S)> 0.8L, 27us_oz
 <Pot (M)> 1.5L, 50.6us_oz
 <Pot (L)> 2L, 67.5us_oz
 <Frypan (L)> 0.9L, 30.4us_oz

Weight: 1034g, 36.5oz



4-5person



Feast XT1

Orange ● Black ●

Aluminum Kettle With Heat-exchanger

Material: Hard Anodized Aluminum, Stainless steel, PA6

Size: <Unfolded> Ø153x141mm, Ø6x5.55in
<Folded> Ø153x88mm, Ø6x3.46in

Capacity: 0.8L, 27.05us_oz

Weight: 246g, 8.6oz



Feast XT2

Orange ● Black ●

Aluminum Kettle With Heat-exchanger

Material: Hard Anodized Aluminum, Stainless steel, PA6

Size: Ø153x131mm, Ø6x5.1in

Capacity: 1.3L, 44us_oz

Weight: 308g, 10.8oz



Feast T3

Orange ● Black

Aluminum Kettle

Material: Hard Anodized Aluminum, Stainless steel, PA6

Size: <Unfolded> Ø152x126mm, Ø6x5in
<Folded> Ø152x74mm, Ø6x2.8in

Capacity: 0.8L, 27us_oz

Weight: 189g, 6.7oz



Feast T4

Orange ● Black

Aluminum Kettle

Material: Hard Anodized Aluminum, Stainless steel, PA6

Size: <Unfolded> Ø152x170mm, Ø6x6.7in
<Folded> Ø152x116mm, Ø6x4.5in

Capacity: 1.3L, 44us_oz

Weight: 243g, 8.6oz





Feast Frypan

Aluminum Cookware

Material: Hard Anodized Aluminum, Stainless steel, PA6

Size: Ø194x42mm, Ø7.6x1.6in

Capacity: 0.9L, 30.4us_oz

Weight: 210g, 7.4oz



Feast Frypan Non-stick

Aluminum Cookware

Material: Hard Anodized Aluminum, Stainless steel, PA6

Size: Ø194x44.5mm, Ø7.6x1.75in

Capacity: 0.9L, 30.4us_oz

Weight: 262g, 9.2oz





Frost 6"

Aluminium Frypan

Material: Aluminium Alloy, Stainless Steel

Size: <Unfolded> 152x266x41mm, 6x10.5x1.6in
<Folded> 152x154x41mm, 6x6.1x1.6in

Capacity: 0.5L, 16.9 us_oz

Weight: 150g, 5.3oz

NEW



ASH

Titanium 8" Frypan

Material: Titanium

Size: <Unfolded> 313x207x36mm, 12.3x8.1x1.4in
<Folded> 207x207x36mm, 8.1x8.1x1.4in

Capacity: 1L, 33.8us_oz

Weight: 146g, 5.14oz

NEW





Feast K2

Orange ● Black

With Heat Exchanger

Material: Hard Anodized Aluminum, Stainless Steel, ABS, PP

Size: Ø188x111mm, Ø7.4x4.4in

Capacity: 1.5L, 50.7us_oz

Weight: 338g, 12oz



Feast Heat-exchanger

Aluminium Cookware

Material: Hard Anodized Aluminium, Stainless Steel, ABS, PA6

Size: <Pot>	<Kettle>	<Non-stick Frypan>
Unfolded: 303x168x122mm, 12x6.6x4.8in	Unfolded: Ø153x141mm, Ø6x5.55in	Unfolded: 307x174x42mm, 12.1x6.8x1.6in
Folded: 175x168x122mm, 6.9x6.6x4.8in	Folded: Ø153x86mm, Ø6x3.46in	Folded: Ø174x42mm, Ø6.8x1.6in

Capacity: <Pot> 1.5L, 50.6us_oz	<Kettle> 0.7L, 23.6us_oz	<Non-stick Frypan> 0.5L, 16.9us_oz
---------------------------------	--------------------------	------------------------------------

Weight: 764g, 27oz





Frost 0.9L

Aluminium Pot

Material: Aluminium Alloy

Size: <Unfolded> 111x242x212mm, 4.4x9.5x8.3 in
<Folded> 113x127x136mm, 4.4x5x5.3 in

Capacity: 0.9L, 30.4 us_oz

Weight: 154.1g, 5.4 oz



NEW



Frost 0.8L

Aluminium Lunchbox

Material: Aluminium Alloy, Stainless Steel, Silicone

Size: <Unfolded> 295x97x65mm, 11.6x3.8x2.6 in
<Folded> 170x97x70mm, 6.7x3.8x2.8 in

Capacity: 0.8L, 27.1us_oz

Weight: 206g, 7.3oz



NEW



Frost

NEW

Ultralight Aluminium Cookware

Material: Aluminium Alloy

Size: <Pot> 175x175x86mm, 6.9x6.9x3.4in <Frypan> 173x173x36mm, 6.8x6.8x1.4in <Plate> 175x175x24mm, 6.9x6.9x0.9in <Pot Lifter> 127x36x44mm, 5.0x1.4x1.7in

Capacity: <Pot> 0.8L, 27.1 us_oz <Frypan> 0.3L, 10.1us_oz <Plate> 0.2L, 6.8 us_oz

Weight: 358.5g, 12.7oz





Antarcti

Fire Maple Antarctic series is made of premium grade of stainless steel. It's a rugged and lightweight essential for backpackers and outdoor enthusiasts.

Whatever boiling water quickly for tea/coffee or cooking a nice meal after long journey, Antarctic is the choice.

Antarcti 1L

Stainless Steel Kettle

Material: Stainless Steel

Size: <Unfolded> Ø152x166mm, Ø6x6.5in
<Folded> Ø152x106mm, Ø6x4.2in

Capacity: 1L, 33.8 us_oz

Weight: 295g, 10.4oz



Antarcti 1.5L

Stainless Steel Kettle

Material: Stainless Steel

Size: <Unfolded> Ø175.5x188.5mm, Ø6.9x7.4in
<Folded> Ø175.5x116.5mm, Ø6.9x4.6in

Capacity: 1.5L, 50.7us_oz

Weight: 370g, 13oz





Antarcti Pot 0.8L

Stainless Steel Cookware

Material: Stainless Steel, ABS

Size: <Unfolded> 282x150x81mm, 11.1x5.9x3.2in
<Folded> 156x150x89mm, 6.1x5.9x3.5in

Capacity: 0.8L, 27us_oz

Weight: 290g, 10.2oz



Antarcti Pot 1.5L

Stainless Steel Cookware

Material: Stainless Steel, ABS

Size: <Unfolded> 304x171x101mm, 12x6.7x4in
<Folded> 177x171x108mm, 7x6.7x4.3in

Capacity: 1.5L, 50.7us_oz

Weight: 359g, 12.7oz



Gourmet

Aluminum Dinnerware

Material: Aluminum Alloy, Stainless Steel

Size: <Dish> Ø197X24mm, Ø7.7X0.9in; <Bowl> 119X52X162mm, 4.7X2X6.3in; <Pot> 189X76X222mm, 7.4X3X8.7in

Capacity: <Dish> 560ml, 19us_oz; <Bowl> 400ml, 13.5us_oz; <Pot> 1.7L, 57.4us_oz

Weight: 485g, 1lb





Antarcti 1L

Stainless Steel Pot

Material: Stainless Steel

Size: <Unfolded> 350x165x110mm, 13.8x6.5x4.3in
<Folded> 165x180x118mm, 6.5x7.1x4.6in

Capacity: 1L, 33.8us_oz

Weight: 402g, 14.2oz



Antarcti 1.2L

Stainless Steel Pot

Material: Stainless Steel

Size: <Unfolded> 180x144.5x236mm, 7.1x5.7x9.3in
<Folded> 147x131x164mm, 5.8x5.1x6.4in

Capacity: 1.2L, 40.5us_oz

Weight: 452g, 15oz





Antarcti 8" Frypan

Stainless Steel Cookware

Material: Stainless Steel, Aluminum Alloy

Size: <Unfolded> 402x215x53mm, 15.8x8.5x2.1in
<Folded> 220x215x60mm, 8.6x8.4x2.3in

Capacity: 1.4L, 47.3us_oz

Weight: 470g, 15.1oz



Antarcti

Duo Cook Set

Material: SUS304, Tritan, Silicone, PC

Size: Pot <Unfolded> 250x130x163mm, 9.8x5.1x6.4in
<Folded> 134x131x163mm, 5.3x5.2x6.4in
Bowl Ø120X52mm, Ø4.7X2in

Capacity: Pot <Rated> 1.2L, 40.5 us_oz <Max> 1.6L, 54 us_oz
Bowl 450ml, 15.2 us_oz

Weight: 518g, 18.2oz





Island

Steam Kit

Material: Hard Anodized Aluminum, Stainless steel, Tritan, PA6

Size: Ø136.5x215mm, Ø5.4x8.5in

Capacity: 1L, 33.8us_oz

Weight: 645g, 22.7oz



FMC-XK6

Aluminum Cookware with Heat-exchanger

Material: Hard Anodized Aluminum, Stainless Steel, TPE

Size: Ø115x133mm, Ø4.5x5.2in

Capacity: 1L, 33.8us_oz

Weight: 223g, 7.8oz



Orange White



Alti 0.9L

Titanium Pot

Material: Titanium

Size: <Unfolded> 129.5x171x211.5mm, 5.1x6.7x8.3in
<Folded> 125x120x134mm, 4.9x4.7x5.3in

Capacity: 0.9L, 30.4us_oz

Weight: 188.7g, 6.6oz



Nimbus 1.2L

Aluminum Kettle

Material: Aluminum Alloy, Stainless Steel

Size: <Unfolded> 176x171x194.3mm, 6.9x6.7x7.6in
<Folded> 176x188.3x106.3mm, 6.9x7.4x4.2in

Capacity: <Rated Volume> 1.2L, 40.5 us_oz
<Max volume> 1.5L, 50.6 us_oz

Weight: 254.5g, 9oz





Antarcti

Barbecue Table

Material: Stainless Steel

Size: <Unfolded> 298x295x134mm, 11.7x11.6x5.3in
<Folded> 148x295x22mm, 5.8x11.6x0.9in

Weight: 730g, 25.75oz



NEW



Antarcti 1.2L

Stainless Steel Kettle

Material: 304 Stainless Steel

Size: <Unfolded> 150x156.5x185mm, 5.9x6.2x7.3 in
<Folded> 150x156.5x109mm, 5.9x6.2x4.3 in

Capacity: 1.2L, 40.6 us_oz

Weight: 310 g, 10.9 oz



NEW



Petrel

Ultralight Pot 600ml

Material: Aluminium Alloy, Tritan, Stainless Steel, PVC, Silicone

Size: <Unfolded> 102x223x149mm, 4x8.8x5.9 in
<Folded> 102x106x149mm, 4x4.2x5.9 in

Capacity: 600ml, 20.3us_oz

Weight: 161.6g, 5.7oz



NEW

DRINKWARE

Live in the sunshine, swim in the sea, drink the wild air's salubrity.
– Ralph Waldo Emerson





Panna

Titanium Kettle



Material: Titanium, Stainless steel

Size: <Unfolded> 164x152x178mm, 6.4x6x7in
<Folded> 164x155x98mm, 6.4x6.1x3.8in

Capacity: 1.1L, 37.2us_oz

Weight: 220g, 7.7oz



FMP-307

Titanium Cup

Material: Titanium

Size: Ø74x82mm, Ø2.9x3.2in

Capacity: 300ml, 10.1us_oz

Weight: 55g, 1.9oz





Alti 0.3L

NEW

Titanium Cup

Material: Titanium

Size: <Unfolded> 115.8x81.5x81mm, 4.5x3.2x3.18in
<Folded> 83.8x81.5x81mm, 3.3x3.2x3.18in

Capacity: 300ml, 10us_oz

Weight: 63g, 2.2oz



Alti 0.6L

Titanium Cup

Material: Titanium

Size: <Unfolded> 153x100x115mm, 6x3.9x4.5in
<Folded> 100x100x105mm, 3.9x3.9x4.1in

Capacity: 600ml, 20us_oz

Weight: 150g, 5.3oz





Antarcti

French Press Coffee Kit

Material: 304 Stainless Steel, 201 Stainless Steel, PP

Size: <Coffee pot> Ø66x135mm, Ø2.6x5.3in
<Coffee cup> Ø74mmx65mm, Ø 2.9x2.56in

Capacity: <Coffee pot> 300ml; <Coffee cup> 180ml

Weight: 371g, 13oz



Bacchus

Portable Titanium Flagon

Material: Titanium

Size: 94x27x130mm, 3.7x1x5.1in

Capacity: 200ml, 6.7us_oz

Weight: 88g, 3.1oz



Ancest

Bushcraft Wooden Cup

Material: : Rubber Wood

Size: 173x108x64mm, 6.8x4.2x2.5in

Capacity: 300ml, 10oz

Weight: 222g, 7.8oz



ASH

Titanium Hip Flask

Material: Titanium

Size: 116x100x30mm, 4.6x3.9x1.2in

Capacity: 170ml, 5.7us_oz

Weight: 52.3g, 1.8oz



NEW

Orca

Yerba Mate Cup 200ml

Material: Stainless Steel

Size: Ø79.8x104mm, Ø3.1x4.1in

Capacity: 200ml, 6.8us_oz

Weight: 140g, 4.93oz



NEW





Coral

350ml Enamel Mug

Material: Enamel, Steel

Size: 116x91x76mm, 4.6x3.6x3in

Capacity: 350ml, 11.8us_oz

Weight: 136.5g, 4.81oz



Orca

Stainless steel insulated bottle 1L

Material: 304 Stainless Steel, PP

Size: 102x121.5x266.5mm, 4x4.8x10.5in

Capacity: 1L, 33.8us_oz

Weight: 596g, 21oz



Silicone

Orange Grey

Collapsible Coffee Cup 350ml

Material: Silicone, PP

Size: <Unfolded> 90.7x83x153mm, 3.6x3.3x6in
<Folded> 90.7x83x88mm, 3.6x3.3x3.5in

Capacity: 350ml, 11.8us_oz

Weight: 152g, 5.4oz



Antarcti

Stainless Steel Pour Over Kettle

Material: 304 Stainless Steel, Beech, Silicone

Size: 260x107x157.5mm; 10.2x4.2x6.2in

Capacity: 750mL, 25.4us_oz

Weight: 427.5g, 15oz





Orca

Vietnamese Coffee Maker

Material: 304 Stainless Steel, Aluminum Alloy

Size: 129x102x75.7mm, 5x4x3in
 Applicable caliber: Ø71.5mm-Ø91mm, Ø2.8in-Ø3.6in

Capacity: 1 cup

Weight: 143.5g, 5.06oz



Orca

Milk Frothing Pitcher 350ml

Material: 304 Stainless Steel

Size: <Unfolded> 90.7x83x153mm, 3.6x3.3x6in
 <Folded> 90.7x83x88mm, 3.6x3.3x3.5in

Capacity: 350ml, 11.8us_oz

Weight: 152g, 5.4oz





Orca

Pour Over Kettle 350ml

Material: 304 Stainless Steel, Beech

Size: 76x213x112mm, 3x8.4x4.4 in

Capacity: 350ml, 11.8 us_oz

Weight: 291.8g, 10.3oz



Orca

Pour Over Kettle 600ml

Material: 304 Stainless Steel, Beech

Size: 91.5x234.5x136.5mm, 3.6x9.2x5.4in

Capacity: 600ml, 21.1 us_oz

Weight: 424.5g, 15 oz



LANTERN

Nature is orderly. That which appears to be chaotic in nature is only a more complex kind of order.
- Gary Snyder





Orange Gas Lantern

● Golden ● Red ● Black

Material: Stainless Steel, Aluminum Alloy, Heat-resistant glass

Size: 95x50x134mm, 3.74x1.97x5.28in

Power: 4g/h

Weight: 128g, 4.5oz





Sandglass

Lightweight Portable Camping Lantern

Red Grey

Material: PC, ABS, Rubber, Aluminum Alloy

Size: <Unfolded> 52x52x108mm, 2.1x2.1x4.3in
<Folded> 52x52x87mm, 2.1x2.1x3.4in

Weight: 133g, 4.7oz



NEW



Firefly

Gas Lantern

Material: Copper, Stainless steel, Aluminum, PP, Glass

Size: Ø59x124mm, Ø2.3x4.9in

Power: 8g/h

Weight: 89g, 3.1oz



CAMPING FURNITURE

Earth and sky, woods and fields, lakes and rivers, the mountain and the sea, are excellent schoolmasters, and teach of us more than we can ever learn from books.

– John Lubbock





Mona

Foldable Camping Chair

Material: Aluminum Alloy, 600D Oxford,
Polyethylene Foamed Sheet, Stainless Steel

Size: <Unfolded> 44x49x76cm, 17.3x19.3x30in
<Folded> 64x49x8cm, 25.2x19.3x3in

Max loading: 100kg, 220lb

Weight: 1.47kg, 3.2lb





Dian

Foldable Camping Chair

Material: Bamboo, Aluminum Alloy, 600D Oxford, Stainless Steel

Size: <Unfolded> 51.5x59x74cm, 20x23x29in
<Folded> 88x16x18cm, 34.6x6.3x7in

Max loading: 100kg, 220lb

Weight: 2.57kg, 5.66lb



Dian

Campstool

Material: Aluminum Alloy, 600D Oxford, Polyethylene Foamed Sheet, Stainless Steel

Size: <Unfolded> 44x34x36cm, 17.3x13.3x14.2in
<Folded> 49x34x2cm, 19.3x13.3x0.7in

Max loading: 100kg, 220lb

Weight: 0.67kg, 1.47lb





Dian

Foldable Camping Table

Material: Aluminum Alloy, Bamboo, 100% Polyester, Stainless Steel

Size: <Unfolded> 45x60x58cm, 17.7x23.6x22.8in
<Folded> 32x47x7.5cm, 12.6x18.5x2.9in

Max loading: 20kg, 44lb

Weight: 3kg, 6.6lb



Lisa

Ultralight Camping Table

Material: Aluminum Alloy, Bamboo, 100% Polyester, Stainless Steel

Size: <Unfolded> 56.5x39x36.5cm, 22.2x15.3x14.3in
<Folded> 42x9x16cm, 16.5x3.5x6.2in

Max loading: 10kg, 22lb

Weight: 1.77kg, 3.9lb



ACCESSORIES

Every accessory help us enjoy variable outdoors





Woodpecker

Titanium Spork

Material: Titanium, Stainless steel

Size: 183.7x36x1.5mm, 7.2x1.4x0.06in

Weight: 23g, 0.8oz





COLOR Tritan Spork

Green Red Yellow Grey

Material: Tritan

Size: <Unfolded> 185x42x19mm, 7.3x1.6x0.7in
<Folded> 103x42x26mm, 4x1.6x1in

Weight: 13g, 0.45oz



COLOR Tritan Bowl

Material: Tritan

Size: Ø112x56mm, Ø4.4x2.2in

Capacity: 350ml, 11.8us_oz

Weight: 89g, 3.1oz





Gourmet

Tea and Coffee Container

Material: PC, PP, Silicone

Size: 146.5X55.5X55.5mm, 5.7X2.2X2.2in

Capacity: 150ml, 5us_oz

Weight: 90g, 3.1oz



Orca

Pour Over Coffee Filter

Material: 304 Stainless Steel

Size: 123.5x103.7x70.5mm, 4.9x4.1x2.8in
 Applicable caliber: Ø51mm-Ø98mm, Ø2in-Ø3.8in

Weight: 143.5g, 5.06oz





Ginkgo

❄ Winter ☀ Summer

Cowhide leather Work Gloves-Winter

Material: Cowhide, Cow split leather

Size: 265x135mm, 10.4x5.3in

Weight: <Winter> 135g, 4.76oz; <Summer> 128g, 4.5oz



NEW



Star

French Press Coffee Filter

Material: Stainless Steel, Silicone, PP, TPR

Size: <Unfolded> 134x125.5x172mm, 5.3x4.9x6.8in
<Folded> 134x172x40mm, 5.3x6.8x1.6in

Weight: 92.2g, 3.25oz



NEW

Orca

Bottle Carrier Holder

Material: Eco Leather

Size: Ø105x777mm, Ø4.13x30.5in

Weight: 596g, 21oz



NEW

Dome

Gas Cartridge Cover

Gold Silver

Material: Stainless Steel

Size: 113x113x80mm, 4.45x4.45x3.15in

Weight: 128g, 4.5oz



NEW

ASH

Titanium Sierra Cup

Material: Titanium

Size: 126x175x45mm, 5x6.9x1.8in

Capacity: 300ml, 10.15us_oz

Weight: 60.6g, 2.13oz



NEW

Antarcti

Utensils Set

Material: Stainless Steel

Size: 163x38x19mm, 6.4x1.5x0.7in

Weight: 94g, 3.3oz



NEW

750ml

Fuel Bottle

Material: Aluminium Alloy, POM

Size: Ø73x250mm, Ø2.9x9.8in

Capacity: 750ml, 25.3us_oz

Weight: 155g, 5.5oz



NEW

Orca

Manual Coffee Grinder

Material: Aluminium Alloy, Stainless Steel, Sandalwood

Size: 178x48x188mm, 7x1.9x7.4in

Weight: 495g, 17.5oz



NEW

Orange

Gas Lantern Lampshade

Material: High Borosilicate Glass

Size: Ø48x107mm, Ø1.9x4.2in

Weight: 58.8g, 2.17oz



NEW

Antarcti

Foldable Coffee Filter

Material: Stainless Steel

Size: <Unfolded> Ø120x63.5mm, 4.7x2.5in
<Folded> Ø74x63.5mm, 3x2.5in

Weight: 44.5g, 1.57oz



NEW

FMS-710

Gas Canister Stand

Material: PC

Size: <Unfolded> Ø215x21mm, Ø8.5x0.8in
<Folded> Ø108x21mm, Ø4.3x0.8in

Weight: 30g, 1.1oz



Wifi

Adapter

Material: Brass, ABS, SUS201

Size: <Unfolded> Ø114x95mm, Ø4.5x3.7in
<Folded> Ø49x82mm, Ø1.9x3.2in

Weight: 113g, 4oz



Gas Tank Cover

220G Gas tank cover

Material: Cowhide

Size: Ø110x65mm, Ø4.3x2.5in

Weight: 50g, 1.7oz



Z1

Propane Cylinder Adaptor

Material: Aluminum alloy, Copper

Size: Ø31x38.6mm, Ø1.2x1.5in

Weight: 38g, 1.3oz



Electric Eel

Ignition

Material: ABS, Stainless steel

Size: 84x27x19mm, 3.3x1x0.7in

Weight: 17g, 0.6oz



Electric Eel

Ignition

Material: ABS, Stainless steel

Size: 84x27x19mm, 3.3x1x0.7in

Weight: 17g, 0.6oz



FMP-709

Fire Starter

Material: Iron-cerium alloy, ABS

Size: 20x21x80mm, 0.8x0.4x3.1in

Weight: 29g, 1oz



Tripod

Material: Aluminum Alloy, Stainless Steel

Size: <Unfolded> Ø1000x1190mm, Ø39.4x46.8in
<Folded> Ø90x580mm, Ø3.5x22.8in

Weight: 1100g, 38.8oz



FMW-503

Wind screen

Material: Aluminum alloy

Size: 600x140mm, 23.6x5.5in

Weight: 110g, 3.8oz



Wind Shield

designed for Fire Maple Lac butane gas stove

Pine

Misty gray



FMW-508

Wind screen

Material: Aluminum alloy

Size: 680x240mm, 26.7x9.4in

Weight: 225g, 7.9oz



Antarcti

Sierra Cup

Material: 304 Stainless Steel

Size: 174x120x47mm, 6.85x4.72x1.85in

Capacity: 300ml, 10.15us_oz

Weight: 180g, 6.34oz



Silicone

Collapsible Bowl 0.5L

Material: Silicone

Size: <Unfolded> 134x123.6x88.6mm, 5.28x4.87x3.49in
<Folded> 134x123.6x33mm, 5.28x4.87x1.3in

Capacity: 500ml, 16.9us_oz

Weight: 160g, 5.6oz



FMT-T23

Multipurpose Cutlery

Material: Titanium

Size: 165x36x1mm, 4.5x1.4x0.04in

Weight: 22g, 0.7oz



Silicone

Collapsible Bowl 1L

Material: Silicone

Size: <Unfolded> 165.9x157x94mm, 6.53x6.18x3.7in
<Folded> 165.9x157x33mm, 6.53x6.18x1.3in

Capacity: 1L, 33.8us_oz

Weight: 250g, 8.8oz



FMT-803

Cutlery Set

Material: Stainless steel

Size: <Fork> Unfolded: 162x26x12mm, 6.3x1x0.4in
Folded: 93x26x15mm, 3.6x1x0.6in
<Spoon> Unfolded: 152x16x14mm, 6x0.6x0.5in
Folded: 88x39x18mm, 3.4x1.5x0.47in
<Knife> Unfolded: 163x8x15mm, 6.4x0.3x0.6in
Folded: 93x17x8mm, 3.6x0.6x0.3in

Weight: 80g, 2.8oz



